



## Job Ready Assessment Blueprint

### Cosmetology



Test Code: 2082 / Version: 01

**“Measuring What Matters”**

## Specific Competencies and Skills Tested in this Assessment:

### Scientific Concepts

- Exhibit comprehension of safety and sanitation procedures
- Identify scientific components of hair and scalp
- Identify scientific components of nails
- Identify scientific components of skin



### Professionalism and Employability Skills

- Demonstrate professionalism and effective communication skills
- Demonstrate knowledge of management skills
- Display familiarity with employability skills

### Physical Service

- Exhibit knowledge and application of shampoos, conditioners, and rinses
- Exhibit knowledge and application of hair and scalp care services
- Exhibit knowledge and application of facial procedures and make-up services

### Manicuring and Pedicuring Skills

- Display understanding of the purpose and effect of manicuring/pedicuring services
- Demonstrate knowledge and application of artificial nail services
- Demonstrate knowledge and application of natural nail services
- Demonstrate knowledge and application of equipment and supplies



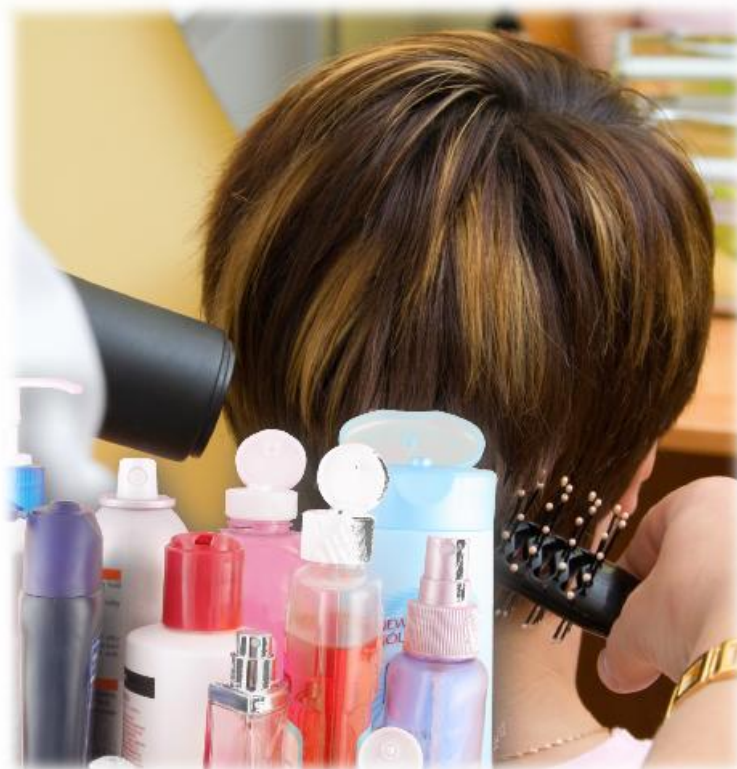
### ***Specific Competencies and Skills continued:***

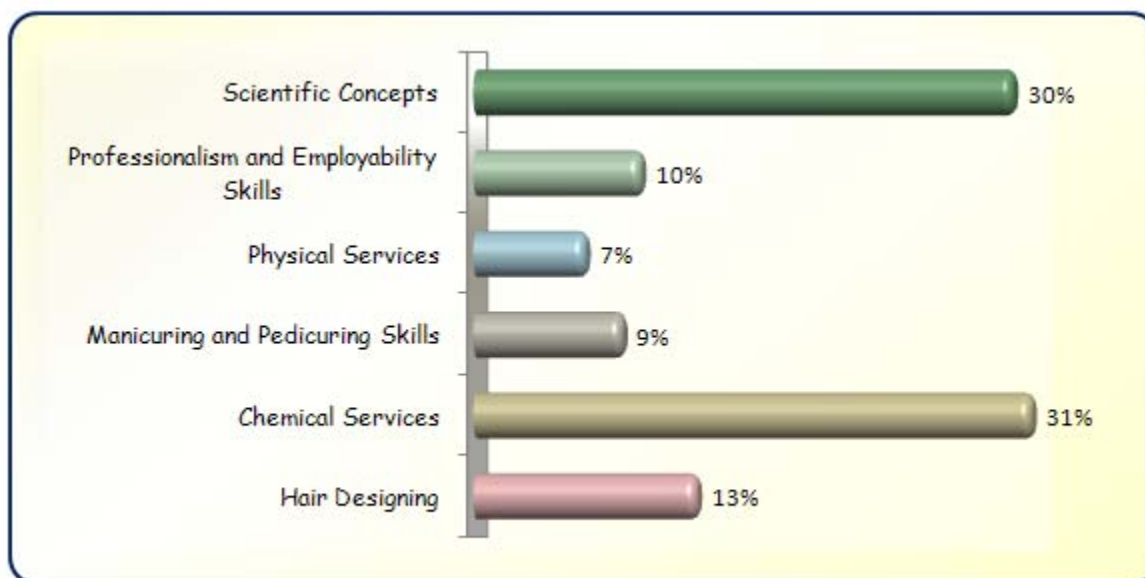
#### **Chemical Services**

- Demonstrate proficiency of the knowledge and application of hair coloring and lightening services
- Demonstrate proficiency of the knowledge and application of chemical waving
- Demonstrate proficiency of the knowledge and application of chemical hair relaxing

#### **Hair Designing**

- Demonstrate knowledge and proficiency of various hair shaping techniques
- Demonstrate knowledge and proficiency of various hair styling techniques
- Display understanding of hair addition methods and procedures
- Demonstrate knowledge and proficiency of various thermal techniques



**Written Assessment:****Administration Time:** 3 hours**Number of Questions:** 134**Areas Covered:**

**Sample Questions:**

To predetermine the results of a predisposition test, the area is left undisturbed for a period of

- A. 24 to 48 hours
- B. 36 to 72 hours
- C. 10 to 20 minutes
- D. 30 to 60 minutes

As a salon professional, suggest needed services to a client by using

- A. written promotional materials
- B. high pressure tactics
- C. tact, diplomacy, and professionalism
- D. a firm tone of voice

When pushing back the cuticle, which part of the nail is affected?

- A. eponychium
- B. onycholysis
- C. lunula
- D. matrix

To avoid overlapping in a tint retouch, apply the tint to the new growth of hair about \_\_\_\_\_ the tinted hair.

- A. 1/16 inch over
- B. 1/16 inch up to
- C. 1/4 inch over
- D. 1/4 inch up to

In making a ridge for a finger wave, hold the comb

- A. flat against the head
- B. parallel with the index finger
- C. one inch below the middle finger
- D. perpendicular to the index finger



## Performance Assessment:

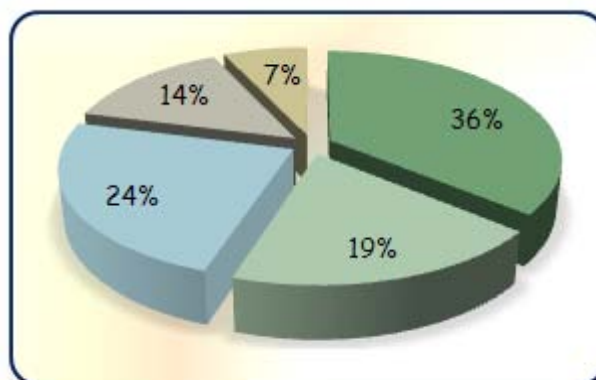
**Administration Time:** 2 hours and 55 minutes

**Number of Jobs:** 5

### Areas Covered:

#### 36% Chemical Applications

Clean/sanitary materials and implements, mannequin is properly draped for chemical service, sectioned hair into four uniform working areas and properly secured section, wear protective gloves during application of chemical service, tint retouch, foil highlight, virgin relaxer, and permanent waving techniques.



#### 19% Haircutting

Clean/sanitary materials and implements, draping of mannequin, haircutting techniques, sectioning of hair, clearly defining parts, controlling of hair, implement handling, properly disposing the hair that has been cut.

#### 24% Blow Dry and Curl or Blow Dry and Press/Curl

Clean/sanitary materials and implements, used a towel when draping of mannequin, blow-drying techniques, pressing comb techniques, and Marcel iron techniques. Work station is left in a clean and orderly condition.

#### 14% Manicure

Clean/sanitary materials and implements, sanitized table, hands and model's hands before manicure service, manicure techniques. Work station is left in a clean and orderly condition.

#### 7% Job Interview

Presentation of resume, pertinent information presented, introduction, description of personal/professional strengths, attire, eye contact and courteousness.

**Sample Job:** Haircutting

**Maximum Time:** 45 minutes

**Participant Activity:** The participant is to complete a 90 degree layered haircut, 5" in length, using their choice of either scissors or a razor. At least one inch of hair must be removed from the entire head. Leave the workstation free of hair and in a sanitary condition.



The Association for Career and Technical Education (ACTE), the leading professional organization for career and technical educators, commends all students who participate in career and technical education programs and choose to validate their educational attainment through rigorous technical assessments. In taking this assessment you demonstrate to your school, your parents and guardians, your future employers and yourself that you understand the concepts and knowledge needed to succeed in the workplace. Good Luck!

