



**NOCTI**  
State Customized  
Credential Blueprint



---

# **Veterinary Assistant (PA)**

Code: 8396 / Version: 01  
Copyright © 2017. All Rights Reserved.

## General Assessment Information

### Blueprint Contents

General Assessment Information	Sample Written Items
Written Assessment Information	Performance Assessment Information
Specific Competencies Covered in the Test	Sample Performance Job

**Test Type:** The Veterinary Assistant PA Assessment was developed based on a Pennsylvania statewide competency task list and contains a multiple-choice and performance component. This assessment is meant to measure technical skills at the occupational level and includes items which gauge factual and theoretical knowledge.

**Revision Team:** The assessment content is based on input from Pennsylvania educators who teach in approved career and technical education programs.



51.0808-  
Veterinary/Animal Health  
Technology/Technician  
and Veterinary Assistant



Career Cluster 1-  
Agriculture, Food and  
Natural Resources



29-2056.00- Veterinary  
Technologists and  
Technicians

## Written Assessment

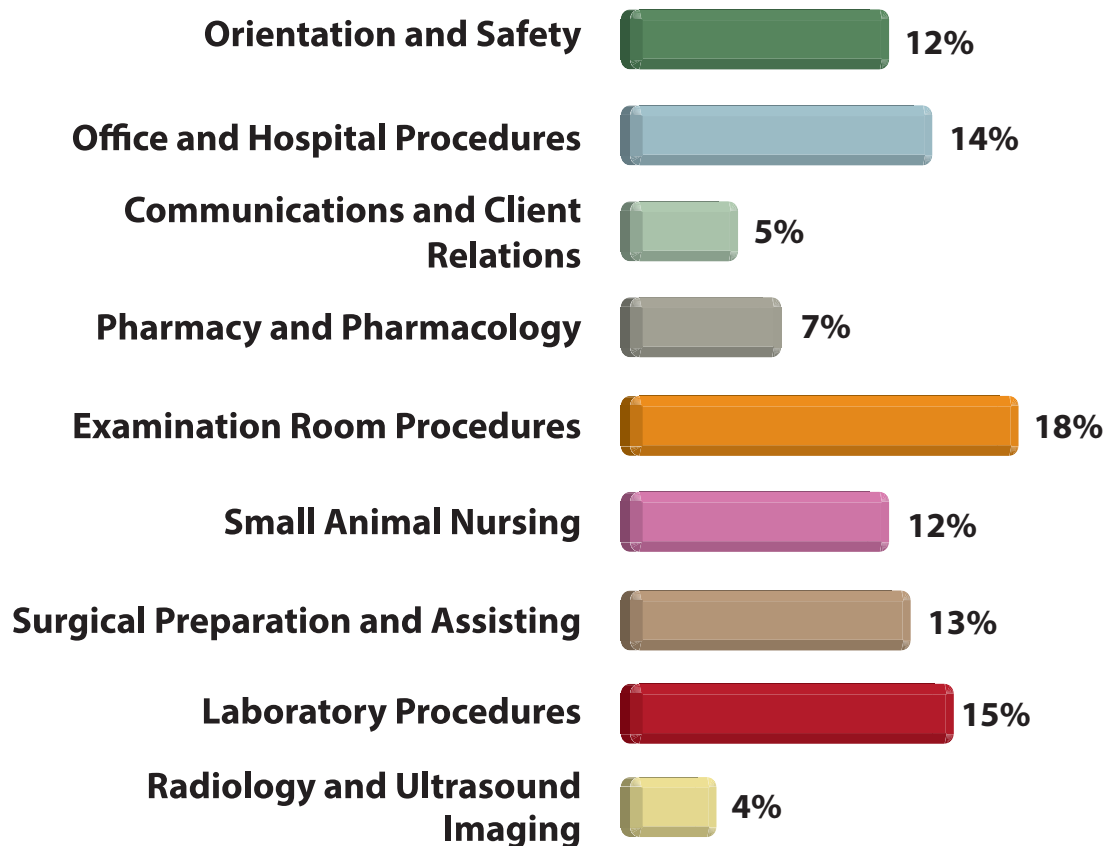
NOCTI written assessments consist of questions to measure an individual's factual theoretical knowledge.

**Administration Time:** 3 hours

**Number of Questions:** 200

**Number of Sessions:** This assessment may be administered in one, two, or three sessions.

### Areas Covered



## Specific Standards and Competencies Included in this Assessment

### Orientation and Safety

- Differentiate between the tasks and roles of veterinary team members
- Recognize normal and abnormal animal behavior patterns
- Follow personal safety measures (PPE) including isolation procedures
- Identify potential zoonotic diseases
- Differentiate between disposal of various types of hazardous material
- Practice sanitation and disinfection techniques within the veterinary facility
- Follow OSHA standards
- Solve basic medical math necessary for the profession

### Office and Hospital Procedures

- Greet clients, schedule appointments, and answer and direct phone calls
- Prepare forms and certificates
- Admit and discharge a patient
- Perform basic veterinary medical recordkeeping procedures including basic filing and retrieving
- Utilize veterinary medical terminology and abbreviations
- Recognize and respond appropriately to veterinary medical emergencies by notifying the appropriate hospital personnel
- Manage basic inventory supplies and restock shelves (e.g., office supplies, retail supplies)

### Communications and Client Relations

- Follow ethical rules of conduct in the veterinary profession
- Demonstrate knowledge of the human-animal bond
- Demonstrate professional appearance and language in the workplace



(Continued on the following page)

## Specific Standards and Competencies (continued)

### Pharmacy and Pharmacology

- Differentiate between the various pharmaceuticals and their classifications (e.g., over-the-counter, prescription, controlled substances)
- Interpret a prescription's terminology
- Prepare and package dispensed drugs and formulate a label
- Reconstitute vaccines and follow proper protocols

### Examination Room Procedures

- Place and remove small animals from cages
- Place and restrain small animals on tables and floor
- Use various restraint devices (e.g., cat and dog muzzles, Elizabethan collars, restraint pole)
- Demonstrate standing, sitting, lateral, sternal, and dorsal restraint positions
- Demonstrate restraint techniques for femoral, cephalic, jugular, and saphenous veins (dog and cat) including restraint for drug vaccine administration
- Identify situations requiring alternative restraint techniques (e.g., ringworm, geriatric, ectoparasite infestation, breed)
- Determine and record temperature, pulse, heart rate, respiration, body condition score, and patient weight
- Identify common AKC dog breeds and CFA cat breeds as well as their sex
- Take animal history and report chief complaint (SOAP format)



(Continued on the following page)

## Specific Standards and Competencies (continued)

### Small Animal Nursing

- Provide routine recordkeeping and observation of hospitalized patients following patient treatment plan (e.g., feed, medication, maintain fluid)
- Utilize terminology, illustrate the structure and function, and describe common diseases of the body systems (e.g., sensory, integumentary, skeletal, muscular, respiratory, circulatory, immune, digestive, urinary, endocrine, reproductive, nervous)
- Administer medication (dog and cat) (e.g., eye, ear, oral)
- Select, identify, and use equipment for grooming procedures (e.g., trim nails, bathe, clean ears)
- Evaluate capillary refill time (CRT) and assess normal mucous membranes

### Surgical Preparation and Assisting

- Clean, prepare, and sterilize surgical instruments, equipment, and supplies, and operate autoclave (e.g., surgical gowns, drapes, packs)
- Identify common instruments
- Assist with positioning and preparation of patients using aseptic technique
- Assist with post-operative patient care
- Maintain proper operating room conduct and asepsis including surgical log
- Perform post-surgical clean up
- Maintain operating room sanitation and care



(Continued on the following page)

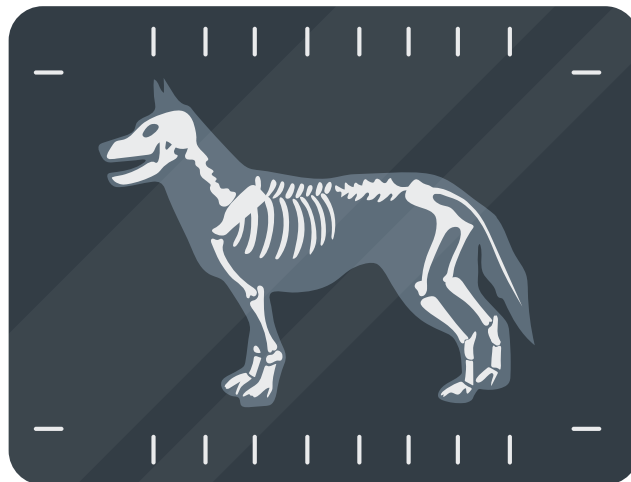
## Specific Standards and Competencies (continued)

### Laboratory Procedures

- Collect voided urine samples for examination (e.g., physical properties, sediment, specific gravity)
- Prepare supplies for blood collection and identify common blood tubes used in veterinary medicine
- Set up a packed cell volume (PCV) plasma protein using a refractometer
- Assist in preparation of specimen staining techniques
- Collect voided fecal samples for examination (e.g., direct smear, flotation, centrifugation)
- Identify external parasites (e.g., mites, lice, fleas, ticks)

### Radiology and Ultrasound Imaging

- Practice radiological exposure protocol
- Assist the veterinarian and/or technician in diagnostic imaging including restraint, preparation, positioning of patients, and processing images
- Care for radiology equipment, maintain quality control, and maintain log



## Sample Questions

**According to veterinary practice law, only the veterinarian may**

- A. make a prognosis
- B. treat a patient
- C. apply a bandage
- D. prepare a prescription

**Some means of disease prevention include sanitation, vaccinations, and**

- A. isolation
- B. frequent watering
- C. restraining
- D. direct contact

**The suffix for "to surgically remove" is**

- A. -scopy
- B. -graphy
- C. -ectomy
- D. -scope

**Where would the veterinary assistant find the hospital's policy regarding employee dress code?**

- A. procedure manual
- B. right-to-know manual
- C. Veterinary Practice Act
- D. OSHA binder

**PRN on a prescription means to give the medicine**

- A. as needed
- B. every other day
- C. twice a day
- D. once a day

*(Continued on the following page)*



## Sample Questions

**When a pet is on the table**

- A. leave them unattended
- B. always apply some type of restraint
- C. tie them up when getting supplies
- D. feed them treats

**A zoonotic disease that affects the nervous system is called**

- A. influenza
- B. hepatitis
- C. rabies
- D. distemper

**The correct way to scrub a surgical site is**

- A. clockwise circular motion outward
- B. to shave it with a 4f
- C. clockwise circular motion inward
- D. with gauze soaked in peroxide

**What color are blood collection tubes that separate serum from red blood cells?**

- A. tiger
- B. lavender
- C. red
- D. green

**An animal lying on its back would be in \_\_\_\_\_ recumbency.**

- A. ventro-dorsal
- B. lateral
- C. dorsal-ventral
- D. sternal

## Performance Assessment

NOCTI performance assessments allow individuals to demonstrate their acquired skills by completing actual jobs using the tools, materials, machines, and equipment related to the technical area.

**Administration Time:** 3 hours and 5 minutes

**Number of Jobs:** 6

### Areas Covered:

#### 7% Identify Tools and Equipment

Participant will identify items displayed and write the item number in table provided.

#### 27% Wrap a General Surgical Pack

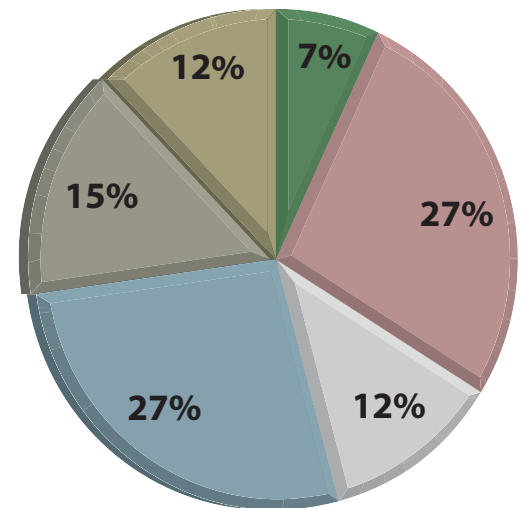
Participant will choose 10 of the instruments provided, place items in the pack, demonstrate double wrapping/unwrapping technique, and clean up test area.

#### 12% Fill a Prescription

Participant will read and interpret prescription, select the correct drug and concentration, count pills, fill and close vial, and record prescription information on label.

#### 27% Muzzle, Restraint, and Anatomical Identification

Participant will properly lift dog onto table, demonstrate muzzling technique, demonstrate required restraint technique, and properly place dog on floor.



(Continued on the following page)

## Performance Assessment (continued)

### **15% Set Up a Fecal Flotation**

Participant will assemble necessary supplies, set up fecalyzer and mix sample, wait allotted time, prepare sample for examination, and clean up test area.

### **12% Read and Fill Syringes**

Participant will read the syringes provided, record amounts; select the correct syringe, draw up correct fluid amounts, and return empty syringes to proper location on table.

## Wrap a General Surgical Pack

**Maximum Time:** 35 minutes

**Participant Activity:** Participant will choose 10 of the instruments, and place the instruments and supplies in the pack. Participant will then demonstrate double wrapping technique for the evaluator, notify evaluator when finished and clean up area.

