

---

# **Cabinetmaking**

## General Assessment Information

### Blueprint Contents

General Assessment Information	Sample Written Items
Written Assessment Information	Performance Assessment Information
Specific Competencies Covered in the Test	Sample Performance Job

**Test Type:** The Cabinetmaking industry-based credential is included in NOCTI's Job Ready assessment battery. Job Ready assessments measure technical skills at the occupational level and include items which gauge factual and theoretical knowledge. Job Ready assessments typically offer both a written and performance component and can be used at the secondary and post-secondary levels. Job Ready assessments can be delivered in an online or paper/pencil format.

**Revision Team:** The assessment content is based on input from secondary, post-secondary, and business/industry representatives from the states of Kentucky, New Jersey, Pennsylvania, and Virginia.



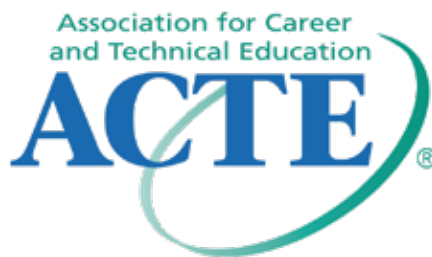
48.0703 - Cabinetmaking  
and Millwork



Career Cluster - Architecture  
and Construction



51-7011.00 - Cabinetmakers  
and Bench Carpenters



The Association for Career and Technical Education (ACTE), the leading professional organization for career and technical educators, commends all students who participate in career and technical education programs and choose to validate their educational attainment through rigorous technical assessments. In taking this assessment you demonstrate to your school, your parents and guardians, your future employers and yourself that you understand the concepts and knowledge needed to succeed in the workplace. Good Luck!



NATIONAL COLLEGE CREDIT RECOMMENDATION SERVICE  
University of the State of New York - Regents Research Fund

In the lower division  
baccalaureate/associate degree  
category, 3 semester hours in  
Cabinetmaking

## Written Assessment

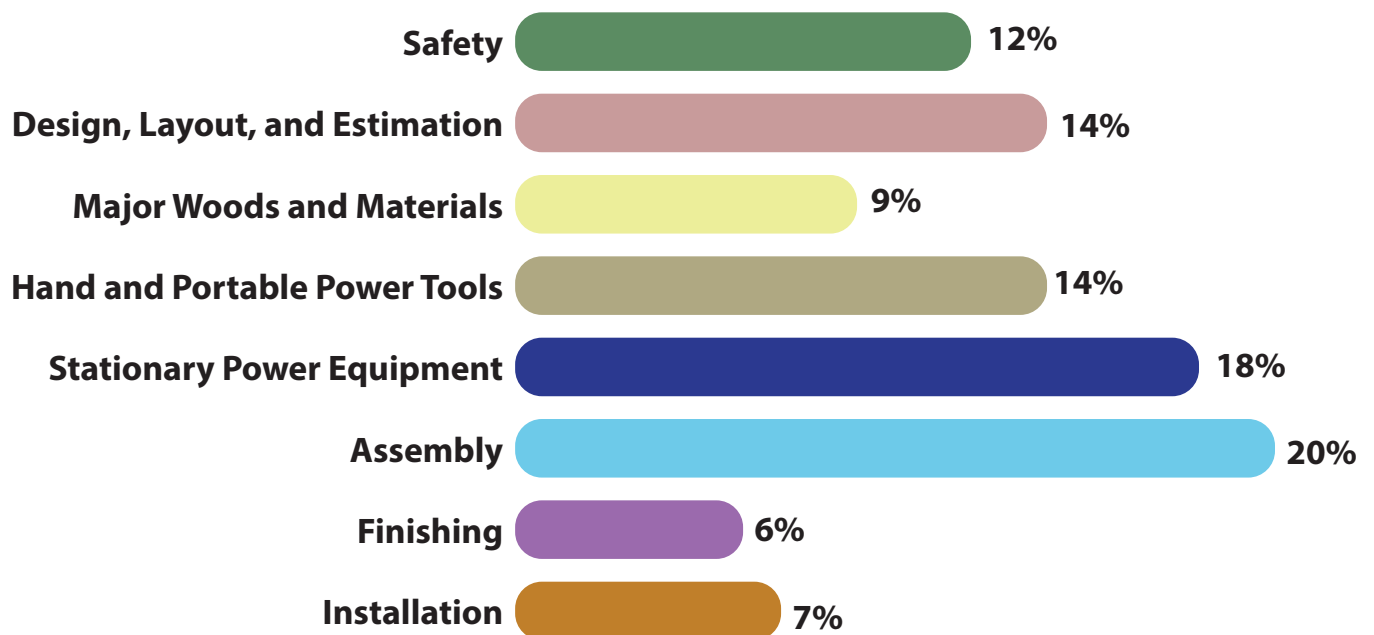
NOCTI written assessments consist of questions to measure an individual's factual theoretical knowledge.

**Administration Time:** 3 hours

**Number of Questions:** 162

**Number of Sessions:** This assessment may be administered in one, two, or three sessions.

### Areas Covered



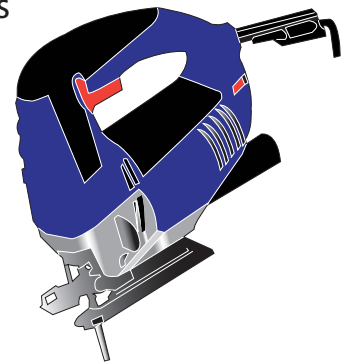
## Specific Standards and Competencies Included in this Assessment

### Safety

- Apply shop and personal safety rules and procedures, including appropriate PPEs
- Identify minor first aid treatment procedures
- Recall fire and electrical safety rules and procedures
- Identify SDS-related issues and information

### Design, Layout, and Estimation

- Interpret blueprints and specifications to industry standards
- Interpret shop drawings/rough sketches
- Interpret detailed drawings
- Interpret a cut list or bill of materials
- Identify types of joints and their uses
- Estimate time and materials

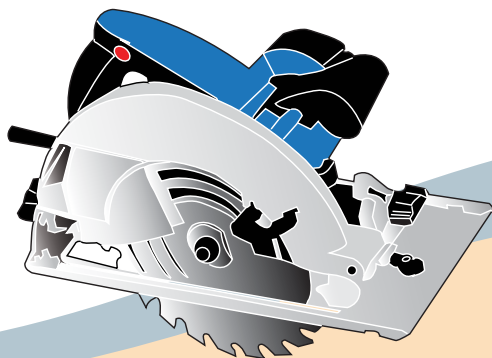


### Major Woods and Materials

- Identify benefits of major woods and wood products
- Demonstrate understanding of characteristics of different woods
- Compare and contrast sheet good materials

### Hand and Portable Power Tools

- Identify proper use of portable power cutting tools
- Identify proper use of fastening tools
- Identify proper use of portable sanders
- Identify proper use of portable routers
- Identify proper use of hand tools
- Identify proper use of portable drills and drivers



(Continued on the following page)

## Specific Standards and Competencies (continued)

### Stationary Power Equipment

- Articulate proper use of stationary saws
- Demonstrate understanding of how to remove and replace stationary saw blades
- Identify proper use of boring machines and tools
- Select and use appropriate boring bits
- Identify proper use of planers and joiners
- Identify proper use of shapers and stationary routers
- Identify proper use of stationary sanders
- Prepare stock

### Assembly

- Identify types and uses of different clamps
- Identify methods of case construction
- Identify various types of joinery
- Identify methods of face frame construction
- Identify various styles of door construction
- Identify various types of drawer construction
- Identify types and uses of hardware and accessories
- Identify and use various fasteners

### Finishing

- Identify types and uses of finishing materials
- Recall safe use and storage of finishing materials
- Recall safe use of finishing tools and equipment

### Installation

- Determine how to install a base cabinet
- Determine how to install a wall cabinet
- Identify industry standards for installation

## Sample Questions

**Proper PPE practices require that workers wear \_\_\_\_\_ while operating all machinery.**

- A. gloves
- B. eye protection
- C. work aprons
- D. head protection

**A scale is an instrument with all increments**

- A. lengthened to proportion
- B. shortened to proportion
- C. shortened to length of project
- D. longer than length of project

**It is best to make up a cut list before estimating the**

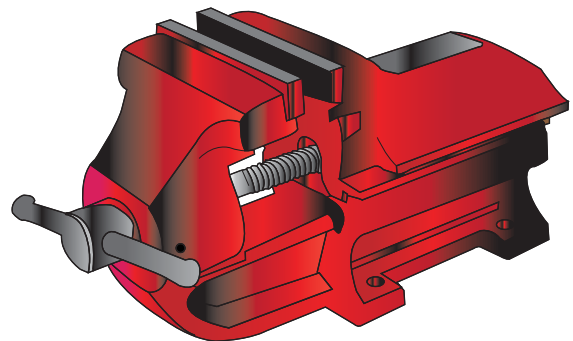
- A. labor cost
- B. material cost
- C. installation time
- D. completion date

**The sheets applied over the core material of plywood panel products are called**

- A. over sheets
- B. face grains
- C. face veneers
- D. panels

**The pneumatic stapler is operated by**

- A. compressed air
- B. electricity
- C. spring tension
- D. hydraulic pressure



*(Continued on the following page)*

## Sample Questions (continued)

**A common cause of band saw blade breakage is**

- A. cutting stock that is too thick
- B. cutting green lumber
- C. applying too much tension to the blade
- D. using a feed rate that is too fast

**The standard height of a kitchen base cabinet, including the counter top, is**

- A. 30 inches
- B. 32 inches
- C. 34 inches
- D. 36 inches

**When using metal drawer guides, \_\_\_\_\_ should be allowed when determining the drawer width.**

- A. 3/4 inch
- B. 1 inch
- C. 1-1/4 inches
- D. 1-1/2 inches

**What is the best technique for applying stain?**

- A. work in strong natural daylight
- B. mix stains to create unique colors
- C. wipe surfaces with solvent-soaked rag
- D. work on a horizontal surface

**After fastening the second wall cabinet securely to the wall,**

- A. replace the doors if they were removed
- B. set the next wall cabinet up to install
- C. clamp and fasten the cabinets together
- D. set the base cabinets in to install

## Performance Assessment

NOCTI performance assessments allow individuals to demonstrate their acquired skills by completing actual jobs using the tools, materials, machines, and equipment related to the technical area.

**Administration Time:** 3 hours

**Number of Jobs:** 3

### Areas Covered:

#### 24% Develop a Cut List

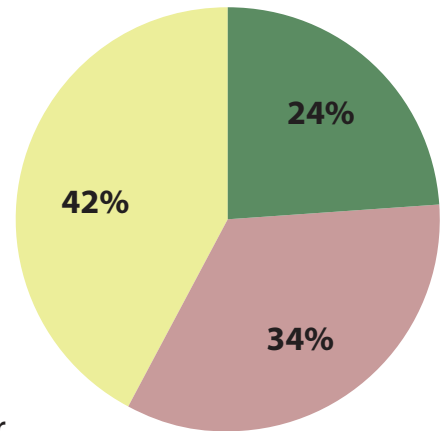
Participant will go to designated station, use the shop drawings provided to complete a cut list, and turn the cut list in to the evaluator. Evaluator will provide a Master Cut List which participant will use to proceed to other jobs.

#### 34% Lay Out, Cut, and Assemble Face Frame

Participant will refer to the drawings provided to lay out, cut, and assemble a face frame, leave the work area clean and orderly, and notify evaluator when finished.

#### 42% Lay Out and Assemble One Drawer

Participant will refer to the drawings provided, lay out and build a drawer, apply wood with edge treatment to drawer front, install drawer pull, leave work area clean and orderly, notify evaluator when finished, and submit Master Cut List and other written materials to the evaluator.





## Sample Job

### Develop a Cut List

**Maximum Time:** 15 minutes

**Participant Activity:** The participant will go to the designated station, use the shop drawings provided as the source of all dimensions and information to create a Cut List, turn the Cut List in to the evaluator and use the Master Cut List the evaluator will provide to proceed to other jobs.

